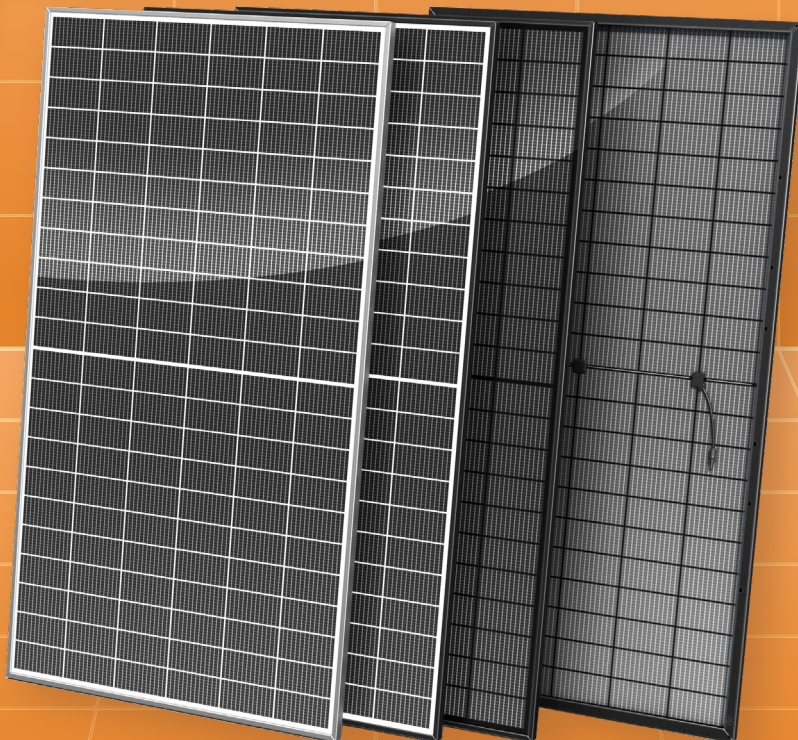


STANDARD SOLAR PANEL

GermanSolar's Standard Solar Panel is High efficiency, convenient and easy to use



GermanSolar
The Partner For Your Solar Lifetime!



BIFACIAL HELIOSLINE PRO MONO G12 132 CELLS SOLAR PANEL

GSM - 670W 675W 680W 685W 690W 695W 700W

GermanSolar is a specialist in customization, introducing colored glass, frames, and back-sheet material and shapes to aesthetically match your ideas with the prospective application. With innovative technology and design, GermanSolar offers high quality modules with enhanced aesthetic appearance for building structures and facades. By providing outstanding customization options, GermanSolar supports your required project needs with colored and shaped panels of your choice, and consults you in choosing the right size, thickness, shape, and color to compliment the design of your application and your building.

FEATURES



Best price-performance ratio



Positive power of up to +5.00 Wp



EL tested and micro cracks inspected



Fully automated production line with German quality engineering and design standards



Better performance in diffused sunlight and high temperature



High ammonia & salt mist resistant certified, and PID-free



Withstands wind loads up to 2400Pa / heavy snow loads up to 5400Pa



15 years 15-year limited product warranty



30 years 30-year linear performance warranty



Class I Division II
Groups A, B, C & D



STANDARD SOLAR PANEL

ELECTRICAL DATA

Nominal Max. Power (Pmax)* (W)	670	675	680	685	690	695	700
Open Circuit Voltage (Voc) (V)	49.21	49.34	49.50	49.66	49.82	49.98	50.13
Short Circuit Current (Isc) (A)	17.00	17.13	17.19	17.25	17.31	17.37	17.43
Max. Power Voltage (Vmpp) (V)	41.18	41.34	41.49	41.65	41.80	41.95	42.10
Max. Power Current (Impp) (A)	16.28	16.33	16.39	16.45	16.51	16.57	16.63
Module Efficiency (%)	21.56	21.72	21.89	22.05	22.21%	22.37	22.53
Power Tolerance	0 ~ +5W						
Temperature Coefficient (Pmax)	-0.26% / °C						
Temperature Coefficient (Isc)	+0.04% / °C						
Temperature Coefficient (Voc)	-0.24% / °C						

* STC: Irradiance 1000W/m², Cell Temperature 25°C, Air Mass AM1.5.

BSTC **

Nominal Max. Power (Pmax)* (W)	738	745	750	756	761	767	772
Open Circuit Voltage (Voc) (V)	49.18	49.34	49.50	49.66	49.82	49.98	50.13
Short Circuit Current (Isc) (A)	18.80	18.88	18.96	19.04	19.09	19.17	19.22
Max. Power Voltage (Vmpp) (V)	41.17	41.33	41.49	41.65	41.80	41.95	42.10
Max. Power Current (Impp) (A)	17.92	18.03	18.08	18.16	18.21	18.29	18.34
NMOT (Nominal Module Operating Temperature)	41°C ± 3°C						

**BSTC: Front side irradiation 1000W/m², back side reflection irradiation 135W/m², AM=15, ambient temperature 25°C.

MECHANICAL DATA

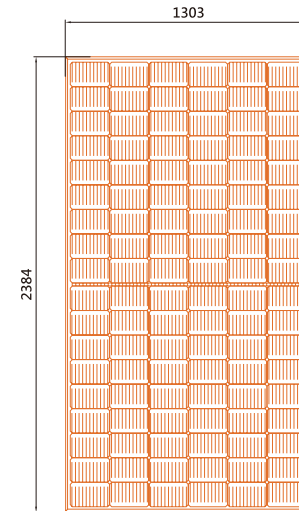
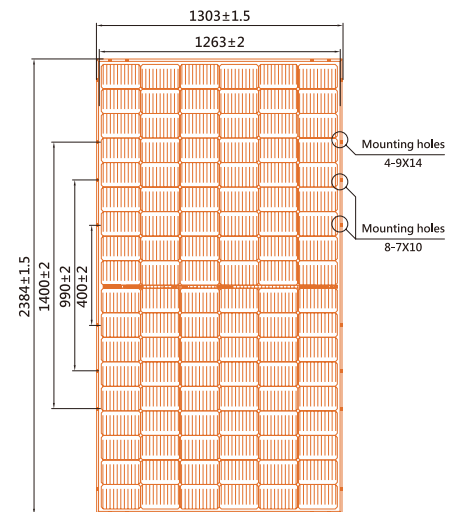
Dimensions	2384 x 1303 x 35 mm
Weight	38.7kg (2.0mm glass) or 35.7kg (1.6mm glass)
Solar Cell	Mono 210 x 105mm
Front Glass	2.0mm anti-reflective surface solar glass or 1.6mm anti-reflective surface solar glass
Back Glass	2.0mm glass or 1.6mm glass
Frame	Anodized aluminum alloy
Junction Box	IP68, 3 diodes
Cable	4mm ²
Connector	MC4 compatible

PACKAGING

Standard Packaging	31pcs /pallet
Pallets Per Container	17
Module quantity per 40' container	527pcs /40' HC container

OPERATING CONDITIONS

Max. System Voltage	1500V
Operating Temperature	-40°C~ +85°C
Max. Series Fuse Rating	30A
Front Side Maximum Static Loading/ Rear Side Maximum Static Loading	5400 Pa /2400pa

STANDARD SOLAR PANEL
Design (mm)
Front View

Back View

LINEAR PERFORMANCE WARRANTY

15 Year Product Warranty | 30 years Linear Power warranty

